



# Oxyflex 4F Design

*A high quality RGP lens for Daily Wear*


## FEATURES

- balanced periphery
- optimum edge lift throughout range of parameters

## BENEFITS

- available in a range of fluorocarbon materials
- choice of tints
- comprehensive range of lens dimensions

## Product Specification

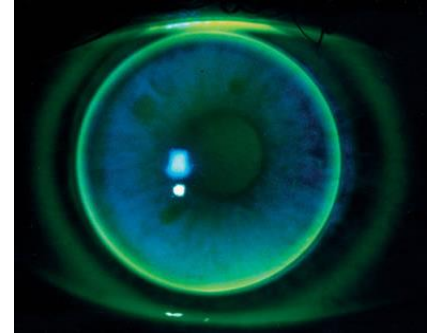
Material	 Focon III 2	Focon III 3	Focon III 4
	F2 <sub>Low</sub>	F2 <sub>Mid</sub>	F2 <sub>High</sub>
Refractive Index	1.460	1.450	1.440
Permeability (Dk)	$28 \times 10^{-11}$	$50 \times 10^{-11}$	$100 \times 10^{-11}$
Wetting Angle	19°	19°	21°
Tints	Blue Grey Green (trial) Clear	Blue Grey Green Clear	Blue - Green Clear
Base Curve (mm)		7.05, 7.12, 7.20, 7.27 7.35, 7.42, 7.50, 7.57 7.65, 7.72, 7.80, 7.87 7.95, 8.02, 8.10, 8.17 8.25, 8.32, 8.40, 8.47	
Diameter (mm)		8.60, 9.00, 9.40 9.80, 10.20, 10.60	
Power Range		-40.00D to +40.00D (0.25D steps)	

# FITTING PROCEDURE

- Full refraction and eye examination
- Keratometry readings
- For a spherical / near spherical cornea fit on flattest 'K'.  
Adjustments should be made according to toricity of the cornea.
- Power should be ordered as Best Vision Sphere, making necessary adjustments if lens has been steepened / flattened in relation to flattest 'K'
- Instil fluorescein to check fitting

## Alignment / Good Fit

- Central position – lens periphery should not extend beyond limbal area
- Smooth movement – lid lifts lens with blink, lens then falls slowly
- Good vision
- Central and mid-peripheral alignment
- Good edge clearance (approx. 0.40mm wide)



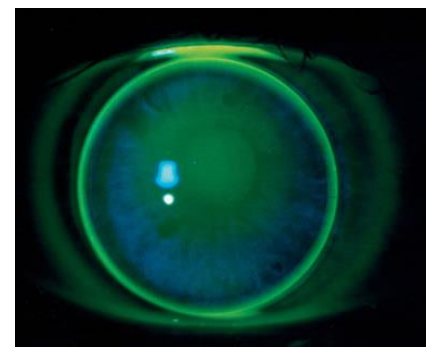
## Loose / Flat Fit

- Excessive and rapid movement upon blink
- Arcuate drooping between blinks
- Lens is unstable and decentres
- If lens drops may show inferior arcuate pooling
- Central touch can be observed
- Excessive edge clearance
- May produce a +ve over-refraction
- Order steeper Base Curve



## Tight / Steep Fit

- Central position
- Little movement with blink
- Central pooling
- Mid-peripheral touch
- Thin band of edge clearance
- May produce a -ve over-refraction
- Order flatter Base Curve



*For any further technical advice please do not hesitate to call our Professional Services Team 01280 702002 Option 2*